

## *Vision for Education in The Bahamas*



Our vision is for a Bahamian Education system that will foster academic excellence and equip students with multiple literacies that will enable them to make meaningful contributions as nation builders who are globally competitive.



## *Mission of the MOEST/DOE*

The mission of the Department and Ministry of Education, Science and Technology is to provide all persons in The Bahamas an opportunity to receive a quality education that will equip them with the necessary beliefs, attitude and skills required for life, both in a democratic society guided by Christian values and in an inter-dependent changing world.”

# The Structure of the Bahamian Education System

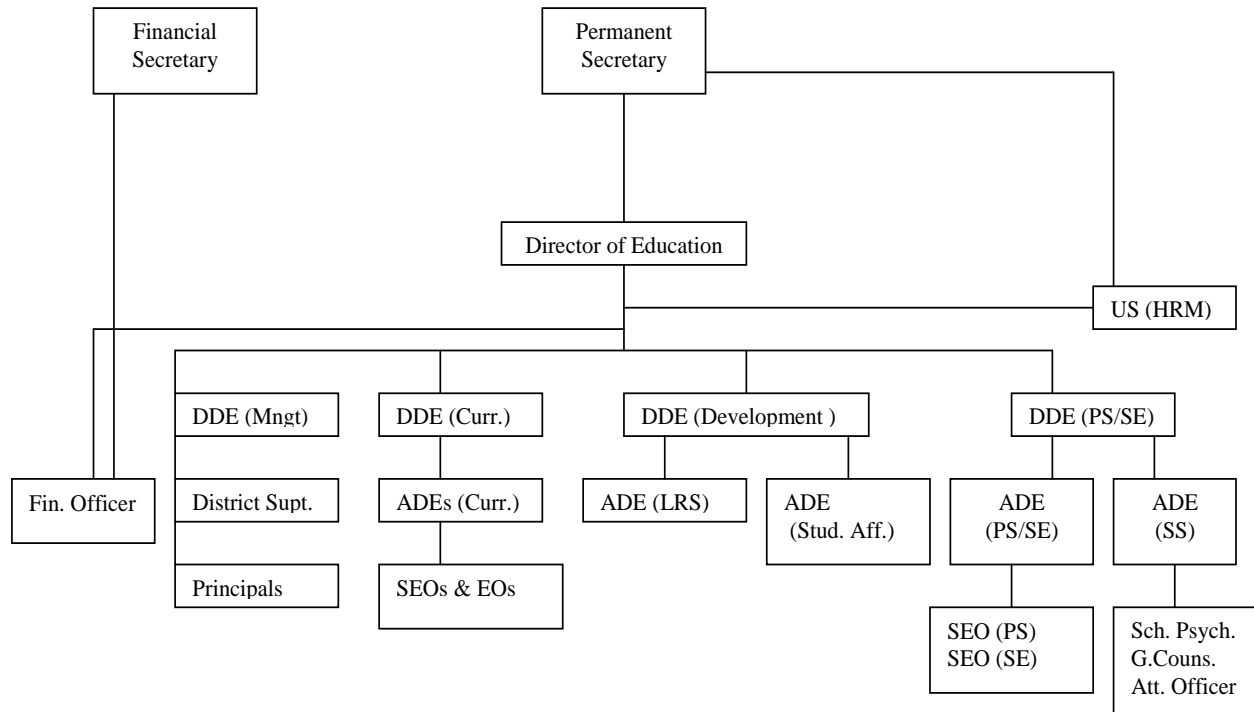
	Nursery	Pre-School	Primary	Secondary	Tech/Voc	Tertiary	
				Jr. High    Sr. High			
Age							
0	No definitive grading scheme at this level						
1							
2							
3		P 1					
4		P 2					
5	Kindergarten		G. 1				Mandatory Education starts at age 5 years
6			G. 2				

# The Structure of the Bahamian Education System

	Nursery	Pre-School	Primary	Secondary		Tech/Voc	Tertiary	
				Jr. High	Sr. High			
				Lower	Upper			
				Secondary	Secondary			

11				G. 7			
12				G. 8			
13				G. 9			BJC at end of year
14					G. 10		
15					G. 11		Mandatory Education ends at age 16 years
16					G. 12		BGCSE at end of year
17						Courses of varying duration up to 3 years	Cert., Dip, AA, Bach, LL.B, Masters.

## Organizational Structure of the Department of Education



### TYPES OF SCHOOLS

**ALL-AGE SCHOOLS:** These are institutions that provide education for children between the ages of 5 and 16 (inclusive) and represent the amalgamation of the primary, junior and senior schools. In The Bahamas they include grades 1 through 12 and are typically found in public school districts located in the Family Islands. However, there are also many private all-age schools.

**ALTERNATIVE SCHOOLS:** These are institutions that provide education for at risk students between the ages of 11 and 16 and are sex specific and in one case residential specific

as well. These institutions have no traditional grades as in the regular schools. Students in these institutions follow an academic curriculum similar to main stream and are able to participate in the national examinations. Additionally, there is a correctional and rehabilitative component in the programme which is design to assist students in coping with their environment. In The Bahamas these include two facilities for boys and girls with behavioural challenges, an institution for pregnant teen students and one state operated institution all of which are located on the islands of New Providence and Grand Bahama.

**JUNIOR HIGH SCHOOLS:** These are institutions that provide education for students in grades 7 through 9 which is the intermediate stage in The Bahamian education system. They typically accommodate students between ages of 11 and 13 (inclusive).

**PRESCHOOLS:** These are institutions that provide formal education for students between the ages of 3 and 4 (inclusive). In The Bahamas, this stage of education is greatly encouraged although not yet mandatory.

**PRIMARY SCHOOLS:** These are institutions that provide education for students in grades 1 through 6 which represent the first stage of mandatory schooling in The Bahamas. They typically accommodate students between ages 5 and 10 (inclusive). Some primary schools have preschool classes/units attached to them.

**PRIVATE SCHOOLS:** All privately managed and operated educational institutions, regardless of whether or not they receive financial support from the government.

**PUBLIC SCHOOLS:** These are institutions that are operated and managed by the Department of Education and fully funded by The Bahamas government.

**SECONDARY SCHOOLS:** These are institutions that cater to children between the ages of 11 and 16 (inclusive) and represent the amalgamation of junior high and senior high levels and include grades 7 through 12.

**SENIOR HIGH SCHOOLS:** These are institutions that provide education for students in grades 10 through 12 which represent the final stage of mandatory schooling in The Bahamian education system. They typically accommodate students between ages 14 and 16(inclusive).

**SPECIAL SCHOOLS:** These are institutions that provide education to students with severe disabilities. These students deviate from the norm in mental characteristics, sensory abilities, neuromuscular or physical characteristics, social or emotional behavior, communication abilities and multiple handicaps to such an extent that they need special education and related services in order to maximize their potential. Typically, students in these schools follow an individualized education plan and are not grouped using the conventional grading system.

The grades of schools are reflected in our policy as can be viewed below:

1- 79	Grade E
80-199	Grade D
200-399	Grade C
400-799	Grades B
≥ 800	Grades A